



TAFFYS

MAKING IT HAPPEN



TAFFYS SUPPORT SERVICES FOR MILITARY PROJECTS

OVERVIEW

Taffys is a support services company targeting corporates operating in Military, Oil and Gas, Construction Engineering, Relief and Mining sectors.

Taffys LLC Dubai & Taffys International UK

Support Services assists large international engineering companies in remote sites, war zones and developing countries, offering bespoke solutions from the initial concept of camp design to managing the entire procurement and supply chain.

Taffys Distribution Division identifies, new innovative and unique products, working closely with the manufacturers to develop and implement regional sales strategies.

Focus on camp structures and infrastructure; rapidly (re) deployable & offer reduced logistics & operation costs and superior protection.



TAFFYS SUPPORT SERVICES

Procurement

Logistics

Freight

Heavy Equipment

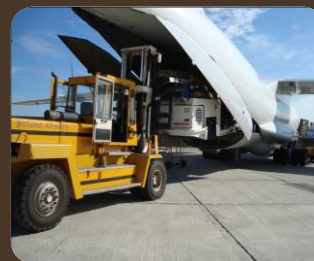
Vehicles

Food Supplies

Technical Spares

Camp Consumables

Human Resources



**SPECIALISTS IN
REMOTE SITE SUPPLIES**

Camp Design & Infrastructure

REM Modular Buildings

Dynamic Air Shelters

Ultrablast Blast Resistant Containers

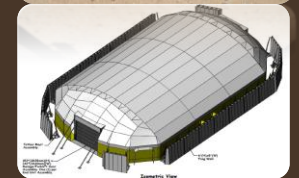
Concrete Canvas

Portafloor Max –interlocking flooring

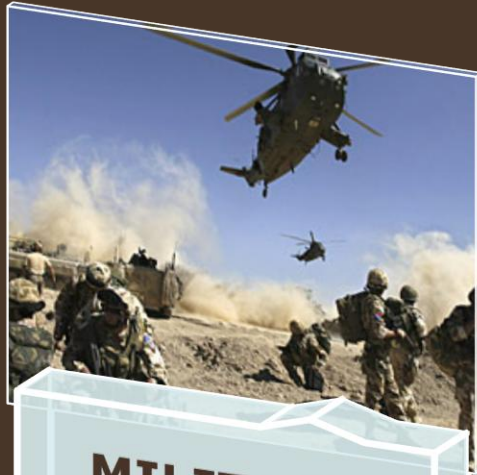
Musthane Bladder Tanks

Pelican Lights & Cases

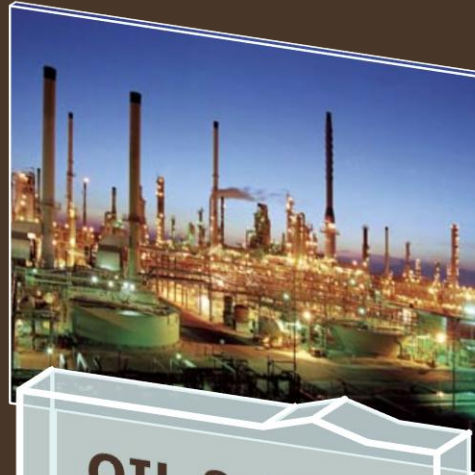
Connor Sports Flooring – Courts in Containers



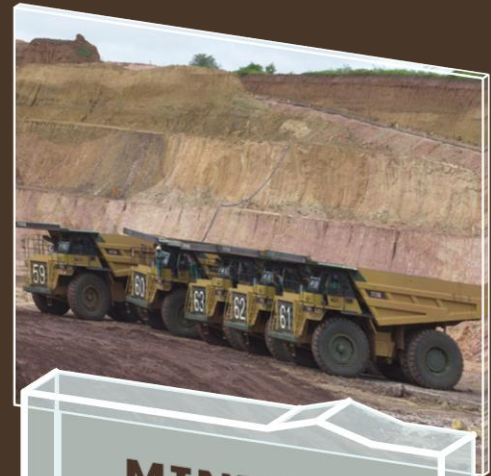
TAFFYS INDUSTRY SECTORS



MILITARY



OIL & GAS



MINING



ENGINEERING



RELIEF

OUR EXPERIENCE

- **Client Solutions**
- **Cost Reduction**
- **Better Service**
- **Client Relationship**
- **Integrating With Client Team**
- **Establish different type of contractual behaviour – cost plus / open book**



PROVIDING SOLUTIONS



FREIGHT SERVICES



TAFFYS
MAKING IT HAPPEN

www.taffys.biz

PROJECT AIR-LIFTS MILITARY EQUIPMENT



FULL CONTAINERS - MILITARY



SOURCING & DELIVERY



AIR FREIGHT



VACUUM TRUCKS



EARTH MOVING EQUIP



GARBAGE TRUCKS



AIRPORT EQUIPMENT



FLATBED TRUCK



BACKHOE

FOOD SUPPLIES



DINING FACILITY / KITCHEN EQUIPMENT



MATERIALS HANDLING EQUIP



PROVISION OF EARTH MOVING & HEAVY EQUIPMENT

AIRFIELD GROUND SUPPORT EQUIPMENT



DECK LOADERS



FUEL TRUCKS



BLADDER TANKS



FIRE TRUCKS



HANGARS

PROVISION OF ALL EQUIPMENT REQUIRED TO RUN AIRFIELD

PROVISION OF HUMAN RESOURCES



PLUMBERS



ELECTRICIANS



CARPENTERS



MECHANICS



FIRE CREW



ADMIN SUPPORT



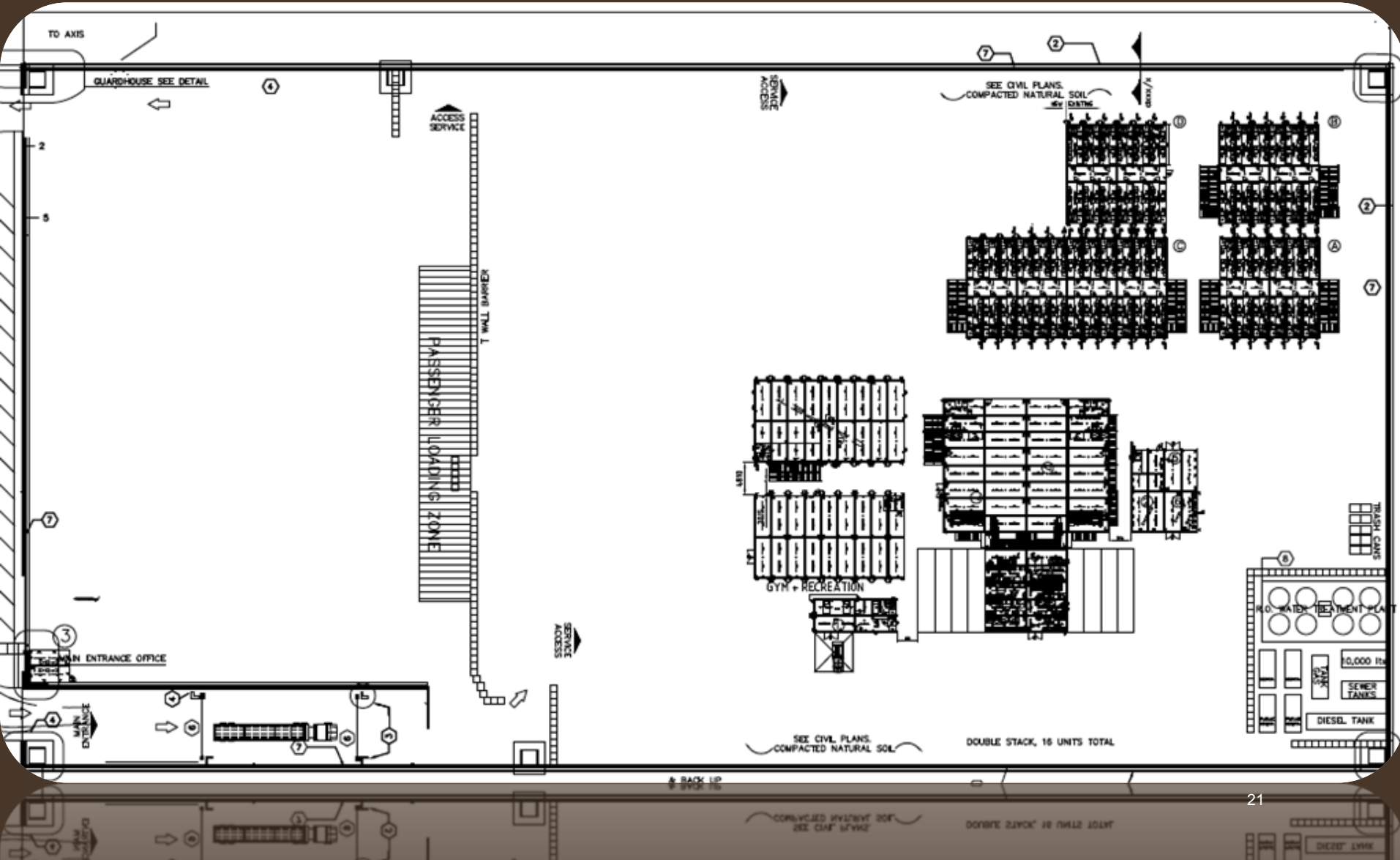
**REM CAMP DESIGN & STRUCTURES – MODULAR
BUILDINGS & FLAT PACKED CONTAINER SOLUTIONS FOR
MILITARY CAMPS**





CAMPS IN LIBYA & IRAQ DESIGNED BY REM

CAMP DESIGNS





RAPIDLY DEPLOYABLE AIR BEAM SHELTERS FOR REMOTE SITES, MILITARY UNITS & OIL & GAS WITH ADDED SIDEWALL PROTECTION

Rapidly deployable air beam shelters by small team.

Ideal for forward operating base

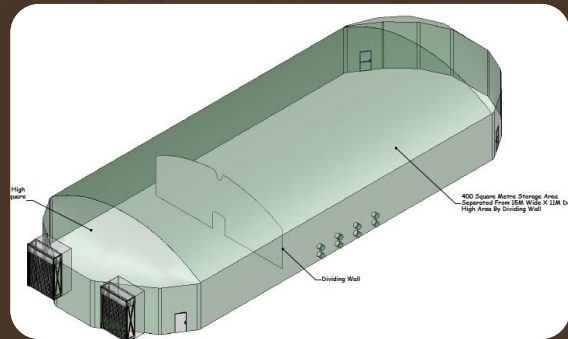
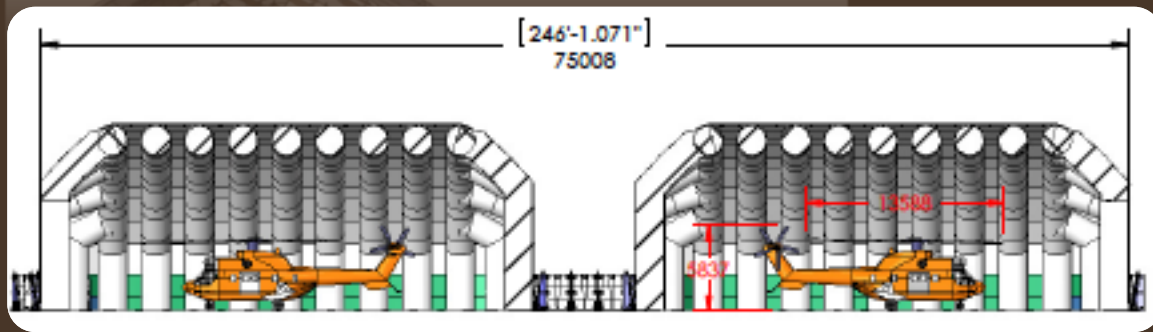
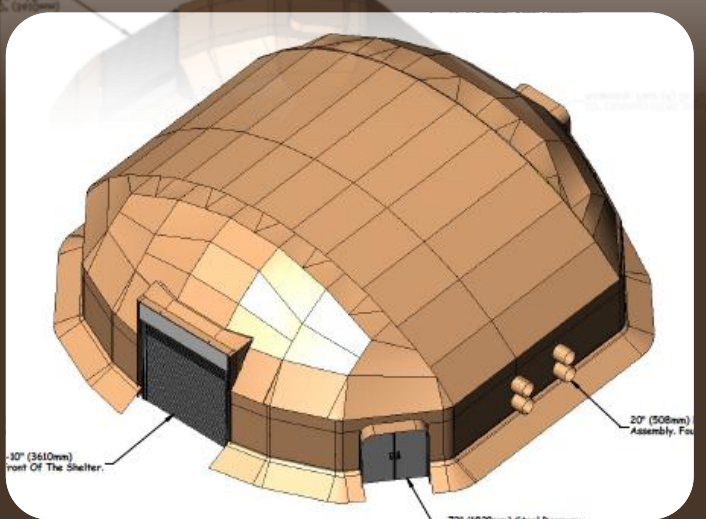
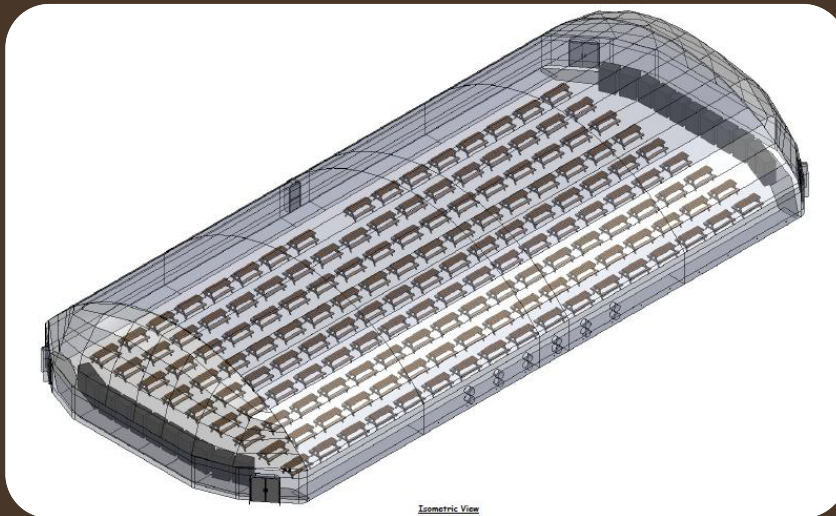
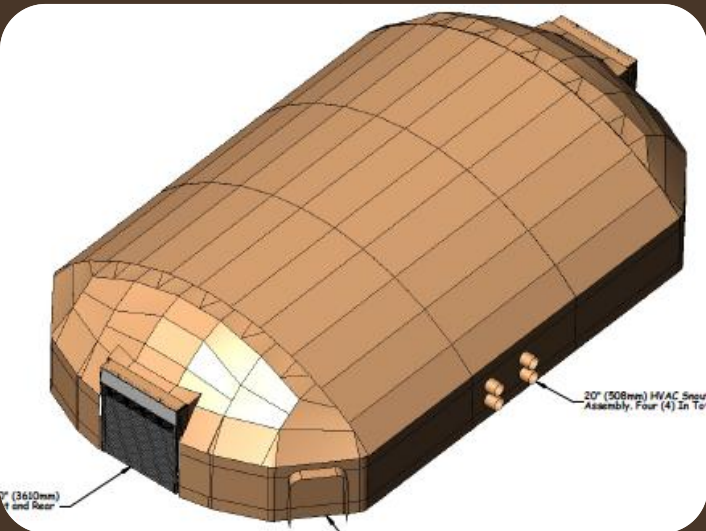
Come with Frag Walls for extra protection

Requires low power and works on air on demand system.

Ideal for storage, warehousing and workshops or even a base command.

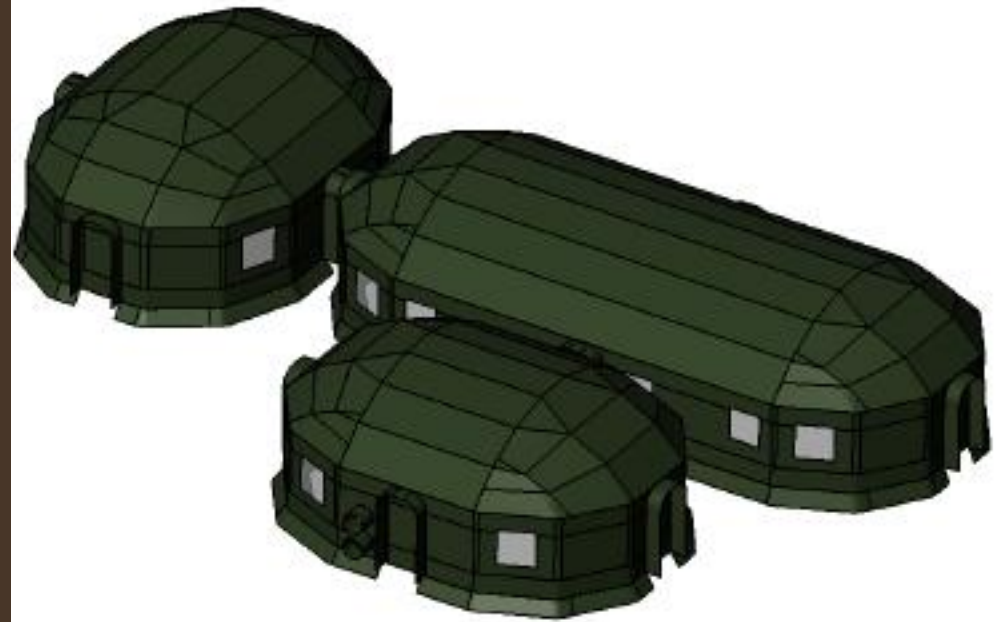
Two units available now: 14mx14mx5.6m high and 14mx26mx5.6m high

Smaller shelter has one roller door, larger shelter has 2 x roller doors – details on next sheets.



DESIGNS

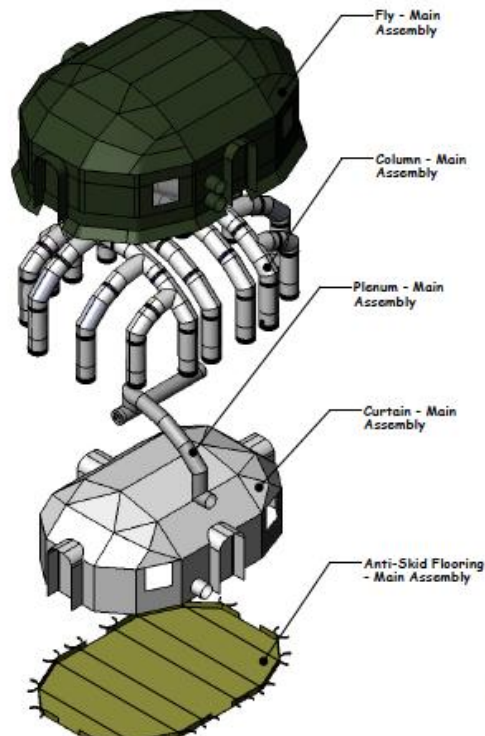
FORWARD OPERATING BASES



Isometric View



Isometric View



- Fire
- Win
- Sno

RAPIDLY DEPLOYABLE



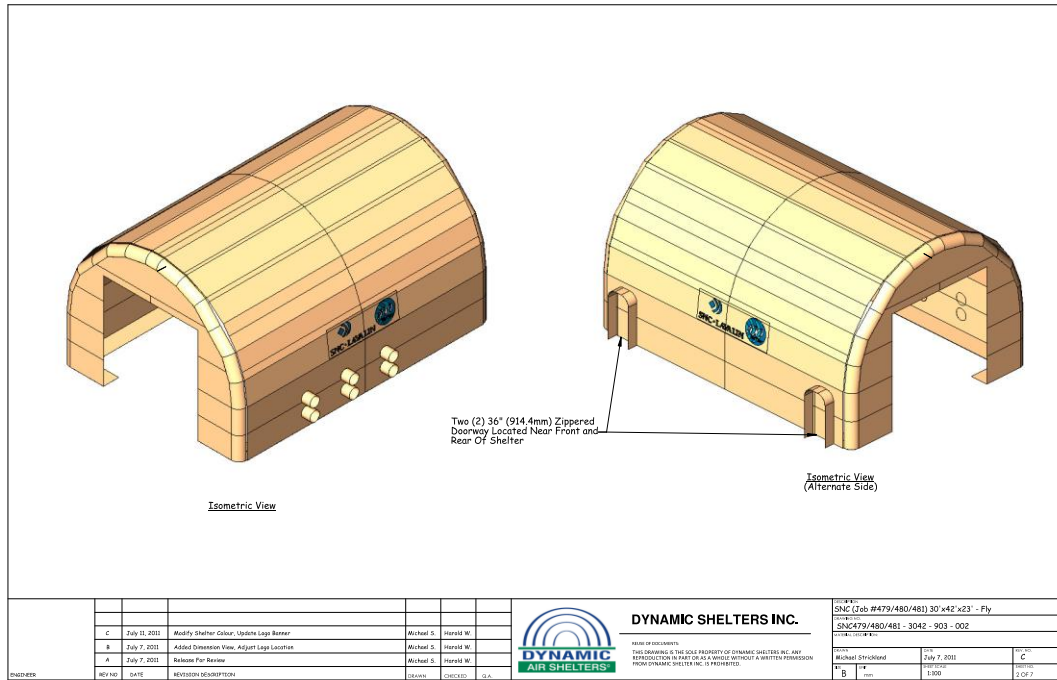
EXAMPLES OF SHELTER SYSTEM



EXAMPLES OF SHELTER SYSTEM



INTERNAL SHOT 900 PERSON DINING FACILITY, O&G



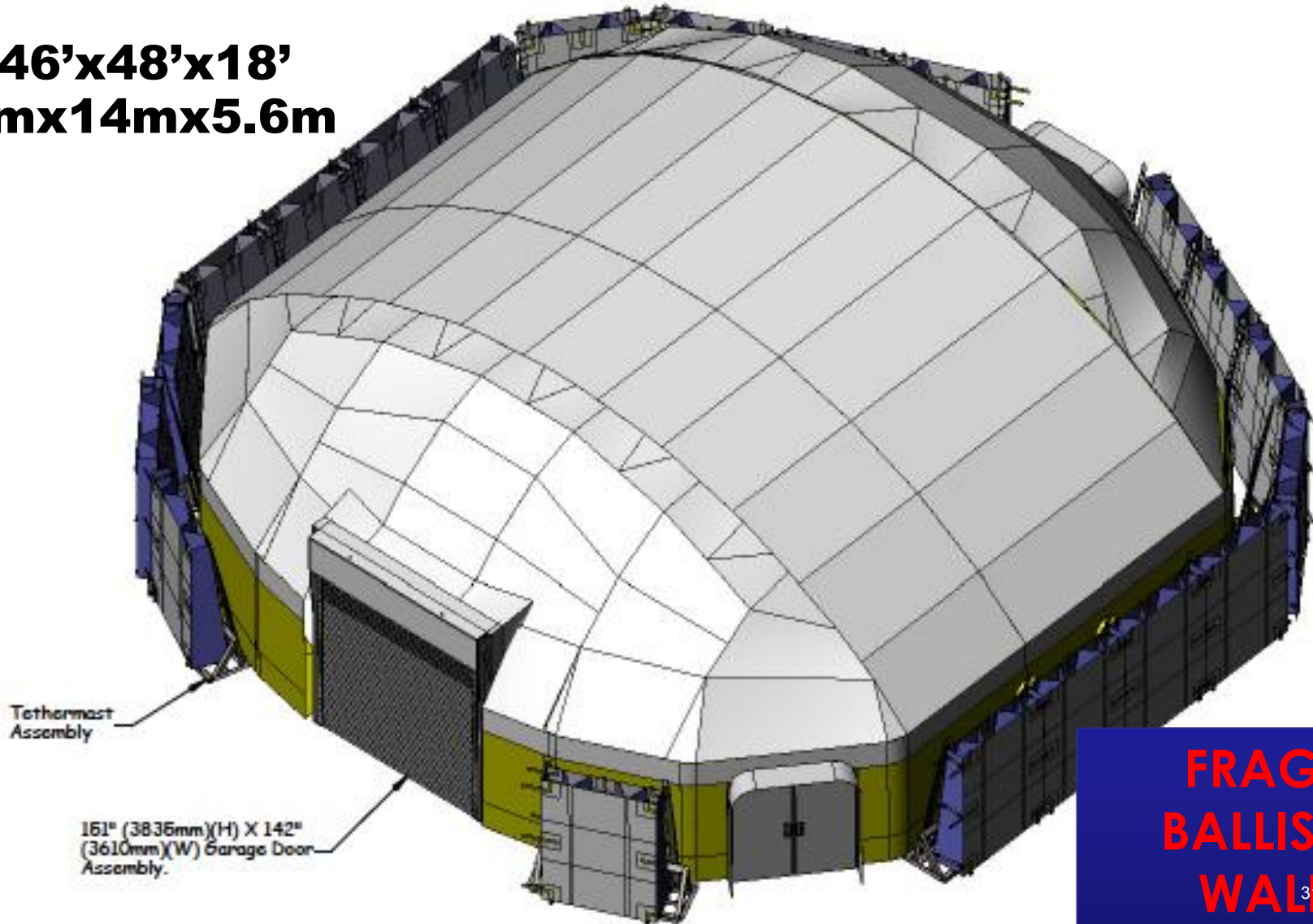
RAPIDLY DEPLOYABLE

*** ABOVE UNITS USED BY CANADIAN FORCES**



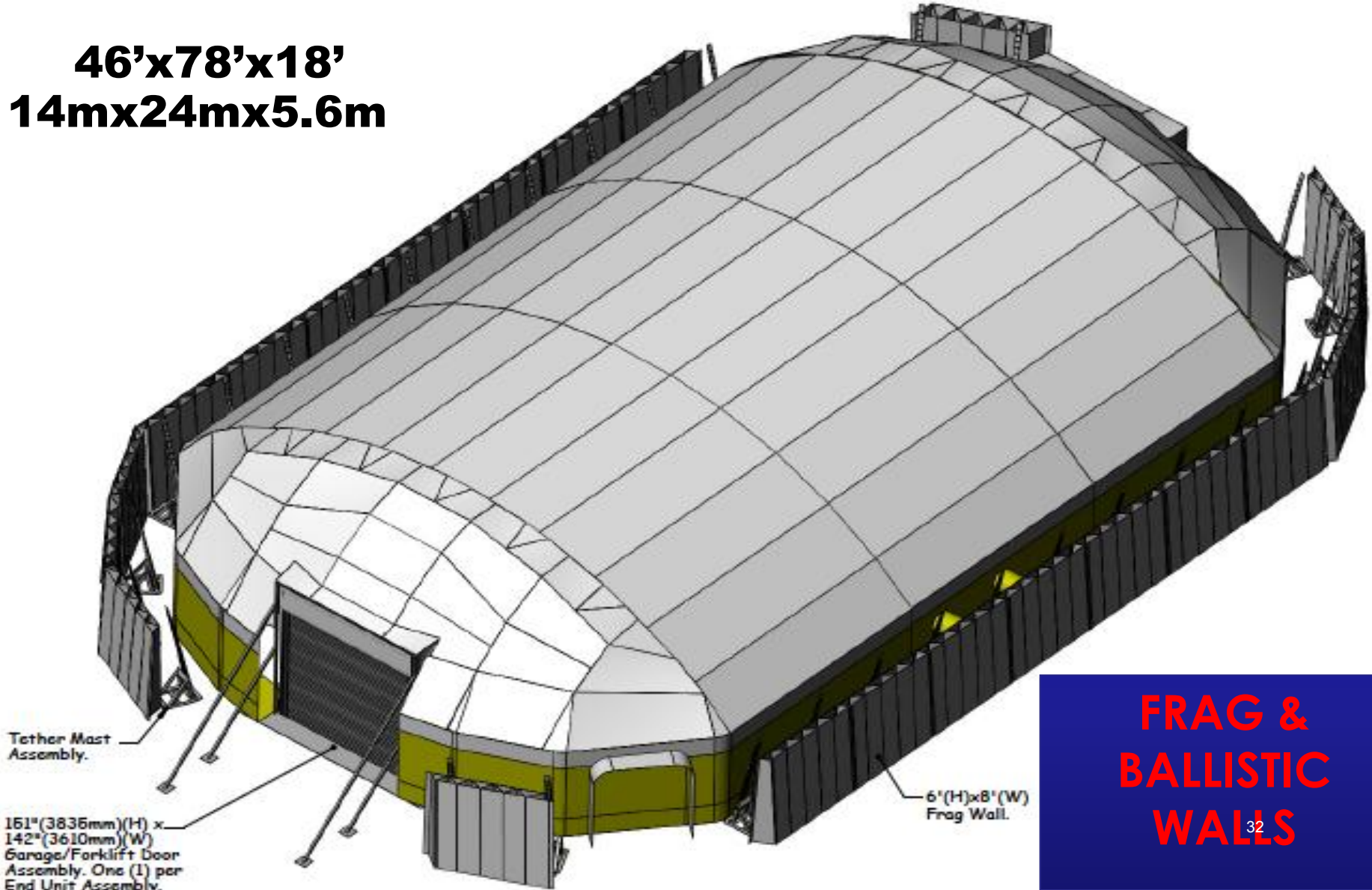
**DESIGNED TO MITIGATE THE EFFECTS OF BLASTS AND
PROTECT PEOPLE AND ASSETS IN HARSH ENVIRONMENTS**

46'x48'x18'
14mx14mx5.6m



**FRAG &
BALLISTIC
WALLS**

46'x78'x18'
14mx24mx5.6m



**FRAG &
BALLISTIC
WALLS**

IN KANDAHAR



SHELTER



ROLLER DOORS



FRAG WALLS



INSIDE LIGHTS



FLOORING



INSIDE VIEW



BLAST RESISTANT CONTAINER UNITS

ULTRABLAST CONTAINERS



Ultrablast units are engineered to withstand a force of upto 1000-millibar over pressure for 100 milliseconds – the equivalent of exerting an 80 ton impact



You can rely on Ultrablast to:

- Fully comply with all health and safety regulations
- Meet or exceed stringent blast resistant standards specified by all major companies involved in the petrochemical industry
- Protect your employees and your reputation
- Deliver a robust and secure storage solution for your hazardous materials
- Provide additional peace of mind protection

Ultrablast can be designed to each of the three levels of deformation response meaning that (if required) in the event of an explosion the building could still be used as a central facility to coordinate emergency response.



**FORWARD OPERATING BASIS
USED BY US, AUSTRALIAN &
CANADIAN FORCES**





*Innovative
Building Solutions*

*Engineered & Manufactured
by Sprung Instant Structures*

MILITARY AIRCRAFT HANGARS



Musthane

MILITARY TENTS



BLADDER TANKS: FUEL & WATER



UP TO 500,000 LITRES

EASY & QUICK TO SET UP
COMPACT, FOLDABLE at
5% of VOLUME
HIGH RESISTANCE TO CLIMATIC
CONDITIONS
NO RISK OF EVAPORATION
PROTECTION OF STORED LIQUID





**RAPIDLY DEPLOYABLE HEAVY DUTY FLOORING
SYSTEM REPLACES CONCRETE, WOOD &
GRAVEL**



- World's strongest temporary / permanent interlocking flooring system.
- Load Capacity: 392,000 Kilograms per square metre.
- Connection system: center locks connect 4 x panels. Edge locks connect perimeter panels
- Each tile 45.7cm x 45.7 cm x 5.1cm, weighs 3.084 kgs
- Rapidly deployed by small team.

PORTAFLOOR MAX



HELIPADS

A HH3F Sikorsky (11,860 lbs./ 5,380 kg) Helicopter landed on PortaFloor **MAX** at a NATO training exercise in Italy. The 16,000 ft²/ 1,486 m² site was installed by the Italian Air Force. **MAX** was secured at the perimeter and was used as a taxiway, landing and takeoff location for the HH3F. **MAX** was tested along side of the heavier counterpart, AM2 matting, as a viable option for a deployable landing facility.



STRUCTURE & ROADWAYS

The Italian Air Force was searching for a temporary, deployable roadway and maintenance flooring system to support a camouflage maintenance shelter. PortaFloor **MAX** provided a strong reconfigurable option for the truck pathway and the shelter flooring. **MAX** adapts to many different type of terrain and obstacles as seen in the insert above where **MAX** was easily adapted to fit around an existing tree trunk.

PORTAFLOOR MAX

TEMPORARY ROADWAY



Tractor trailers with caliche material (**MAX** is slated as a replacement material) used to prep drilling sites in Texas, rolled over PortaFloor **MAX**. Over 150 trucks made the turn during the six week temporary need for a reusable road material that could be moved from site to site without expensive reclamation and recycling efforts. **MAX** reduced rutting from the constant traffic of the heavy trucks. The sub-base was leveled and rolled to produce a level, flat and firm surface for the successful install of the **MAX** panels.

surface for the successful install of the **MAX** panels. leveled and rolled to produce a level, flat and firm constant traffic of the heavy trucks. The sub-base was recycling efforts. **MAX** reduced rutting from the from site to site without expensive reclamation and

PHYSICAL TRAINING FACILITIES



PortaFloor **MAX** was recently installed as the flooring solution for a portable structure military fitness center. The heavy duty reusable flooring system provides a non-skid solid surface that supports free weights and weight training equipment. The **MAX** design allows for dry or wet cleaning with its ability to drain quickly. Its resistance to mold and chemicals makes it a perfect use for this type of facility. **MAX** was easily cut to fit the unique design of the structure and the 3,400 sq. ft. installation was completed in just over 3 hours.

installation was completed in just over 3 hours. unique design of the structure and the 3,400 sq. ft. for this type of facility. **MAX** was easily cut to fit the resistance to mold and chemicals makes it a perfect use dry or wet cleaning with its ability to drain quickly. Its

PORTAFLOOR MAX

MAINTENANCE PADS



After a year of testing, the 416th Theater Engineer Command (USAR) has recognized the **MAX** flooring system as a deployable maintenance pad for their portable maintenance structures. Each area will be roughly 800 square feet and fit within a standard structure. The floor has been tested using the 54,900 pound M984 HEMTT Wrecker and light-weight aircraft aluminum plates to reinforce the point load weight of the jack stands.

STRUCTURE FLOORING



PortaFloor **MAX** was recently installed inside a Sprung® structure as a heavy duty reusable flooring system for inventory storage versus a gravel sub-base. The floor easily contoured to the structure's unique shape by including 6" wide cable-channeled **MAX** pieces that enabled a custom fit. **MAX** provided a firm stable surface for the rolling service doors. In structure installations, **MAX** can be installed inside the structure or extended beyond the sides for a clean and durable foundation.

The World's Best Temporary Flooring

EXPEDITIONARY

PORTAFLOOR.MAX™

HEAVY DUTY FLOORING • REPLACES CEMENT, WOOD AND GRAVEL
HEAVY DUTY FLOORING • REPLACES CEMENT, WOOD AND GRAVEL

Portafloor Max used in Afghanistan by US Forces as a staging area.

PORTAFLOOR MAX



Used by NATO Italian Forces

PORTAFLOOR MAX

BENEFITS

- Custom matting sizes
- Reconfigurable in the field
- Quick installations
- Easily re-locatable
- 1/3rd the weight of comparable rigging mats
- Supports 80,000 psf (390,594 kgf/m²)
- Easy access underneath system for clean up
- Locking system secures panels to larger sized mats
- Contours to sub base terrain
- Made with recycled materials / Zero foot print

PortaFloor **MAX** Matting

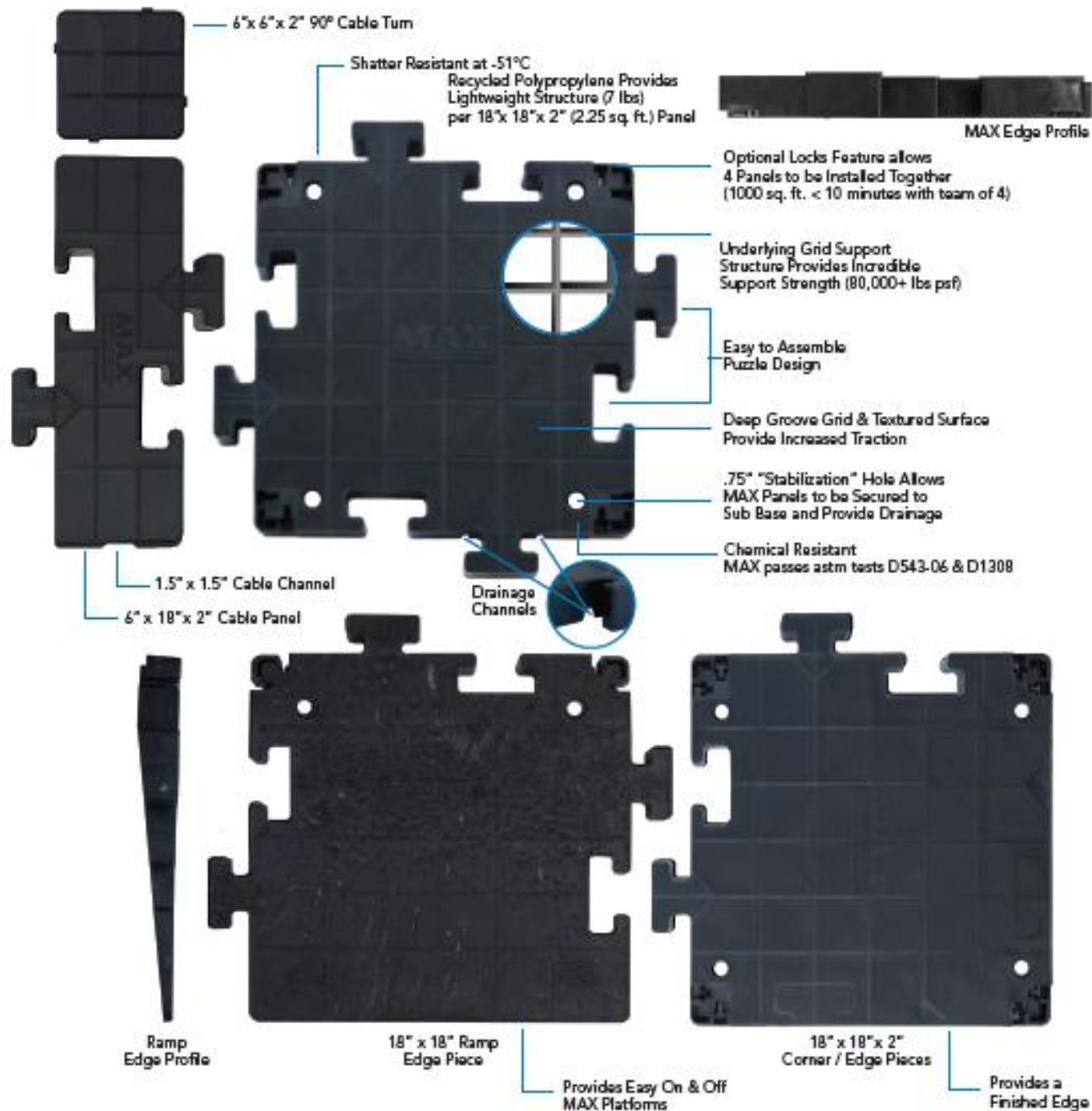
Temporary Roadway and Rig Matting System



45 ft² (4.18 m²)
135 lbs (61.23 kg)

*4 x 5 panel matting system shown

**Custom sizes available





**Watch a video of Portafloor Max
by clicking on the links below**

PortaFloor MAX 3 minute Video

<https://www.dropbox.com/s/qkv2jag1f5ida82/MAX%20The%20Strongest%20Floor%20On%20Earth%20HD%2010-30-13.mp4>

PortaFloor MAX 45 sec Sizzle Video (also located on the website)

<https://www.dropbox.com/s/gh25n9x818godur/MAX%20Sizzle%2010-30-13.mp4>

PortaFloor MAX Helipad Video

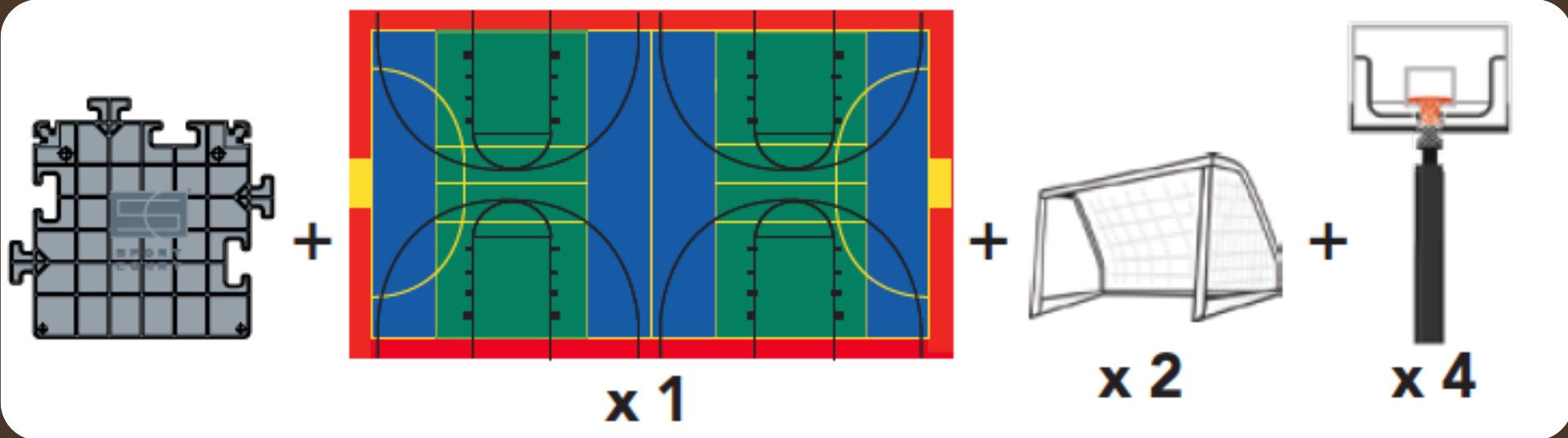
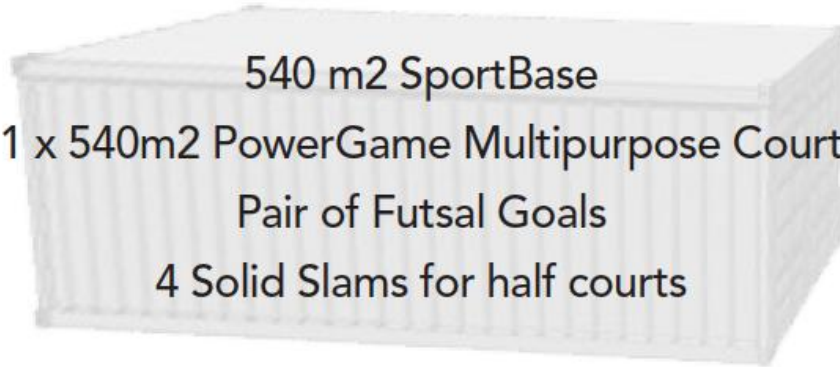
<https://www.dropbox.com/s/qn08off0gr7nly9/MAX%20Heli%2010-30-13.mp4>



SPORTS COURTS: COURTS IN A CONTAINER

COURTS IN CONTAINERS: OPT 1

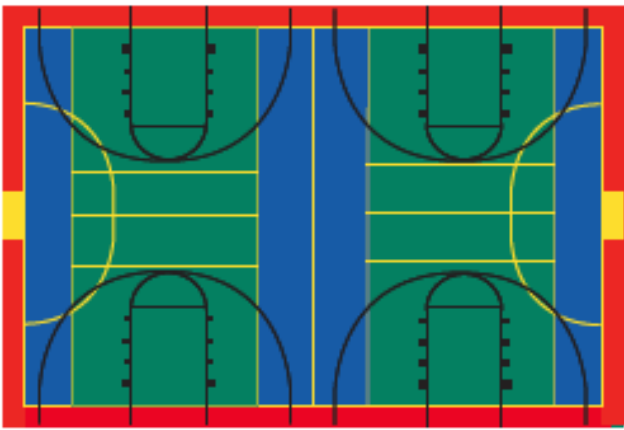
540 m² SportBase
1 x 540m² PowerGame Multipurpose Court
Pair of Futsal Goals
4 Solid Slams for half courts



COURT & BASE IN A CONTAINER

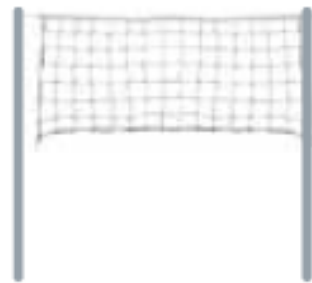
COURTS IN CONTAINERS: OPT 2

3 x 650m² PowerGame Multipurpose Courts
3 Pairs of Futsal Goals
12 Solid Slams for half courts
6 Sets of Volleyball Everything



x 3

+



x 6

+



x 6

+



x 12

COURT IN A CONTAINER

COURTS IN A CONTAINER



BEFORE



SPORTBASE INSTALL



COMPLETED SPORTBASE



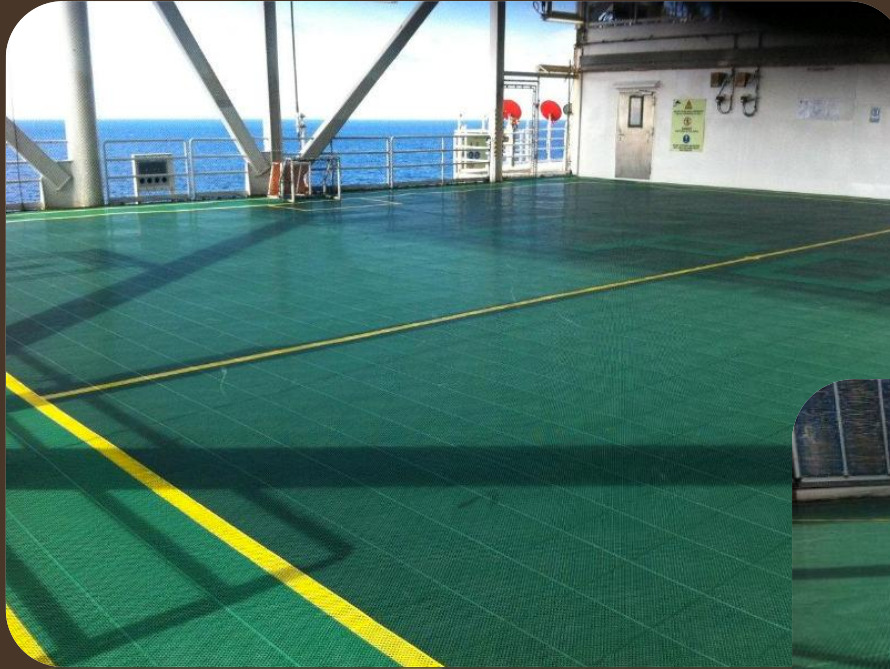
COMPLETED COURT



MAKING IT HAPPEN

www.taffys.biz

SPORTS FLOORS FOR ALL



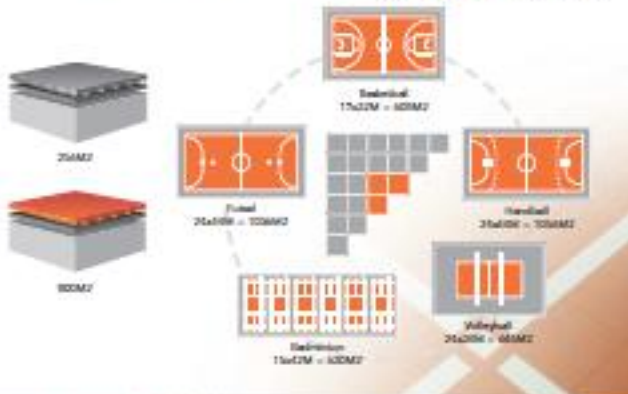


CHILE JAPAN BAHAMAS

The Transcourtable Portable Courts For Every Sport

Your facility's portable floor does not need to be a confusing mass of colored lines!

The internationally approved modular Sport Court® system allows you to customize your surface each time you use it. The same flooring can be a basketball court one week, a futsal floor the next, or a pure volleyball, handball or badminton court. Simple installation, proven safety, ISO certified quality and approved by international federations for your competition.



Sport Court International®

Partners for Better Performance



Sport Court International®

Suspended Indoor Court Surfaces



Sport Court® has been a member of the FIBA study center since 1994 and was recently recognized for our outstanding contribution to the development of basketball.



UNITED STATES

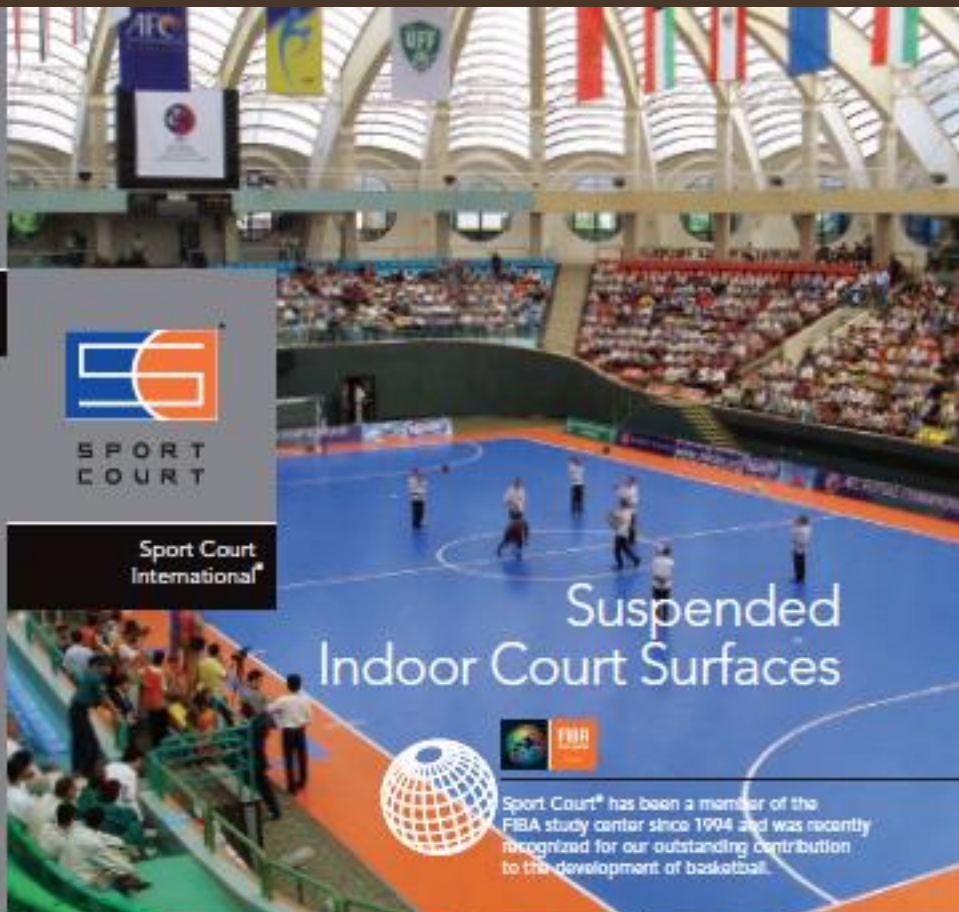


Contact Us Now

For information about how we can help you with your indoor court needs.

+1.801.972.0260
www.connorsportcourt.com/globalmarket
info@sportcourt.com

Printed on recycled paper 50 gsm Recycled



SLOVAKIA

+1.801.972.0260
www.connorsportcourt.com/globalmarket
info@sportcourt.com



**FLEXIBLE STORAGE TANKS (BLADDER TANKS) WATER,
FUEL, OIL, HYDROCARBONS & CHEMICALS**



EASY & QUICK TO SET UP
COMPACT, FOLDABLE at
5% of VOLUME
HIGH RESISTANCE TO CLIMATIC
CONDITIONS
NO RISK OF EVAPORATION
PROTECTION OF STORED LIQUID

UP TO 500,000 LITRES





**RAPIDLY DEPLOYABLE CONCRETE IN A ROLL, USED BY
DUTCH ARMY IN AFGHANISTAN**

CONCRETE CANVAS

Concrete Canvas (or concrete on a roll) is a geotextile impregnated with cement, simply roll it out add water to it and it forms a hard water and fire resistant layer.

The product comes in 3 x thicknesses, CC5, CC8 & CC13 (circa 5mm, 8mm and 13mm thickness).

Its biggest benefit is it can be rapidly installed for all sorts of remote site applications, 3,000 SQM of CC5 or 2,000 SQM CC8 each fit into a 40ft container.

Applications; ditch lining, slope protection, dust suppression, heli-pads, trackway, bund lining, drainage, gabion stabilisation.

RAPID INSTALLATION



COMES IN A ROLL



ROLL IT OUT



ALSO BY HAND



FORM A DITCH



SIMPLY HYDRATE



IN 24 HOURS READY

CIVIL ENG APPLICATIONS



CULVERTS



SLOPE PROTECTION



DITCH LINING



REMEDIATION



LANDFILL SITES



CONCRETE SHELTER

OIL & GAS APPLICATIONS



BUND LINING



**TANK FARM
REMEDICATION**



**OFF SHORE SEA
DEFENCE**



BLOW DOWN PITS



FIREWALLS



PIPE PROTECTION

MILITARY APPLICATIONS



SANGAR STABILISATION



TRACKWAY



HELI-PADS / DUST SUPPRESSION



GABION REINFORCEMENT



RAPID FOUNDATIONS

***NOTE CC IS NOT BULLET PROOF**



**Watch a video of Concrete Canvas
by clicking on the links:**

Concrete Canvas Shelter

[Video 1: Concrete Canvas Shelter](#)

Concrete Canvas Overview

[Video 2 Concrete Canvas](#)

Concrete Canvas Military Overview

[Video 3 Concrete Canvas](#)



WORLD FAMOUS PELICAN LIGHTS & CASES

REMOTE AREA LIGHTING – RECHARGEABLE LED

9430 - WIDE BEAM



- Wide 90° beam
- Large area coverage

9430IR - STEALTH BEAM



- Night vision compatible infrared 7" LED beam
- Low thermal signature

9430SL - SPOT BEAM



- Focused 10° beam
- 300 yard reach



9460

Using solid state mounted LEDs coupled with a thermally efficient light engine and a Pelican Protector Case™, the IRLS 9460 gives the user the ultimate maintenance free portable floodlight station to get the job done efficiently, safely and on time. A rugged 1610 Pelican Protector Case™ houses all its light heads and a multi-stage universal charger for total self-contained convenience. It is also equipped with a telescopic handle and rugged wheels for ease of transport.



9440 and 9445*

The most innovative IRLS units to date, the 9440 and safety approved 9445 move fast to light up ravines, confined spaces, overbanks... anywhere your apparatus can't go. Deployed, the mast extends 7 feet high, shining light over low obstructions encountered by traditional lantern style lights. With a 120 degree beam spread and up to 2400 lumens, the entire emergency area will have the light you need for a safe and swift operation.

Both models are maintenance free, using super tough LED lamp modules and NiMH batteries for up to 14 hours of continuous light.



SAFETY APPROVED



9470

The 9470 contains four heads that will illuminate 360 degrees using solid-state mounted LEDs coupled with a thermally efficient light engine. A rugged 1610 Pelican Protector Case™ houses all its light heads and a multi-stage universal charger for total self-contained convenience. The 9470 is equipped with a telescopic handle and rugged wheels for ease of transport.



9500

The 9500 Shelter Lighting System provides soldiers with safe, secure and silent LCD interior shelter lighting in either red or white light. The system is extremely rugged and is sealed to a 2 meter concrete drop-test, offering survivability not found in fluorescent lighting. Light heads are linked together and secured via hanging straps inside the temporary shelter/accommodation. The light output color (red or white) is controlled via an inline switch and each light head can be independently switched on/off. The system is powered by the enclosed universal AC power supply or by an auxiliary 12-30 vdc power source such as the 9430 or 9460.

MILITARY CASES: MOBILE ARMORY



M2 MACHINE GUN RECEIVER & TWO BARRELS

Item Number	Color	Hardware
475-MW0385-C-133	DRY	Black Cabinet
475-MW0385-C-137	OLIVE DRAB	Black Cabinet
475-MW0385-C-330	DESERT TAN	Black Cabinet
475-MW0385-C-020	BLACK	Black Cabinet
475-MW0385-S-133	DRY	Black Stainless Steel
475-MW0385-S-137	OLIVE DRAB	Black Stainless Steel
475-MW0385-S-330	DESERT TAN	Black Stainless Steel
475-MW0385-S-020	BLACK	Black Stainless Steel

NSN Numbers: 816-01-460-200 (C-D, Black Cabinet Hardware), 816-01-460-200 (C-D, Dry, Black Cabinet Hardware), 816-01-460-200 (C-D, Olive Drab, Black Cabinet Hardware), 816-01-460-200 (C-D, Desert Tan, Black Cabinet Hardware), 816-01-460-200 (C-D, Black, Black Cabinet Hardware)

Top-of-the-line durable security for one M2 Weapon receiver and two barrels within custom configured form.

Case Exterior
50" L x 17" W x 12.3" H
1270 x 432 x 312 mm

5 PACK M4 CARBINES & 5 M11 PISTOLS

Item Number	Color	Hardware
475-M4-M11-C-133	DRY	Black Cabinet
475-M4-M11-C-137	OLIVE DRAB	Black Cabinet
475-M4-M11-C-330	DESERT TAN	Black Cabinet
475-M4-M11-C-020	BLACK	Black Cabinet
475-M4-M11-S-133	DRY	Black Stainless Steel
475-M4-M11-S-137	OLIVE DRAB	Black Stainless Steel
475-M4-M11-S-330	DESERT TAN	Black Stainless Steel
475-M4-M11-S-020	BLACK	Black Stainless Steel

This weapon carrier packs five M4 Carabines and five M11 Pistols into one protective transport case.

Case Exterior
37.3" L x 27" W x 14.5" H
947 x 686 x 368 mm

WHEELABLE PACK UP TO 6 M4s WITH ATTACHED SIGHTS, LIGHTS & 6 M9 PISTOLS

Item Number	Color	Hardware
475-M4-Rear-W-C-133	DRY	Black Cabinet
475-M4-Rear-W-C-137	OLIVE DRAB	Black Cabinet
475-M4-Rear-W-C-330	DESERT TAN	Black Cabinet
475-M4-Rear-W-C-020	BLACK	Black Cabinet
475-M4-Rear-W-S-133	DRY	Black Stainless Steel
475-M4-Rear-W-S-137	OLIVE DRAB	Black Stainless Steel
475-M4-Rear-W-S-330	DESERT TAN	Black Stainless Steel
475-M4-Rear-W-S-020	BLACK	Black Stainless Steel

Six M4s with attached sights, lights and accessories fit comfortably with room for an additional six M9 pistols.

Case Exterior
51.8" L x 27.6" W x 21.4" H
1316 x 701 x 544 mm

10 PACK BERETTA 9MM, PLUS MAGAZINES

Item Number	Color	Hardware
475-M9-10-C-133	DRY	Black Cabinet
475-M9-10-C-137	OLIVE DRAB	Black Cabinet
475-M9-10-C-330	DESERT TAN	Black Cabinet
475-M9-10-C-020	BLACK	Black Cabinet
475-M9-10-S-133	DRY	Black Stainless Steel
475-M9-10-S-137	OLIVE DRAB	Black Stainless Steel
475-M9-10-S-330	DESERT TAN	Black Stainless Steel
475-M9-10-S-020	BLACK	Black Stainless Steel

This case grips ten 9MM Beretta (including two extra magazine each) in specific or loose security.

Case Exterior
26.5" L x 18.9" W x 13.4" H
673 x 480 x 340 mm

24 PACK M9 BERETTA 9MM PISTOL CASE

Item Number	Color	Hardware
475-M9-WM-24-C-133	DRY	Stainless Color Plated Steel
475-M9-WM-24-C-137	OLIVE DRAB	Stainless Color Plated Steel
475-M9-WM-24-S-133	DRY	Stainless Color Plated Steel
475-M9-WM-24-S-137	OLIVE DRAB	Stainless Color Plated Steel
475-M9-WM-24-S-330	DESERT TAN	Stainless Color Plated Steel
475-M9-WM-24-S-020	BLACK	Stainless Color Plated Steel

Up to one with a twenty-four pack of M9s loaded up with risk-reduce hardware and protection.

Case Exterior
27" L x 21" W x 10" H
688 x 533 x 254 mm

SINGLE M16 RIFLE WITH/WITHOUT M203 GRENADE LAUNCHER

Item Number	Color	Hardware
475-M16M203-C-133	DRY	Black Cabinet
475-M16M203-C-137	OLIVE DRAB	Black Cabinet
475-M16M203-C-330	DESERT TAN	Black Cabinet
475-M16M203-C-020	BLACK	Black Cabinet
475-M16M203-S-133	DRY	Black Stainless Steel
475-M16M203-S-137	OLIVE DRAB	Black Stainless Steel
475-M16M203-S-330	DESERT TAN	Black Stainless Steel
475-M16M203-S-020	BLACK	Black Stainless Steel

NSN Numbers: 816-01-460-200 (C-D, Black Cabinet Hardware), 816-01-460-200 (C-D, Dry, Black Cabinet Hardware), 816-01-460-200 (C-D, Olive Drab, Black Cabinet Hardware), 816-01-460-200 (C-D, Desert Tan, Black Cabinet Hardware), 816-01-460-200 (C-D, Black, Black Cabinet Hardware)

Store and ship one M16, with or without attached M203 grenade launcher, and one M2 Pistol with room left over for accessories.

Case Exterior
50" L x 17" W x 10" H
1270 x 432 x 254 mm

2 PACK M16s WITH/WITHOUT M203 GRENADE LAUNCHER

Item Number	Color	Hardware
475-M16-2-C-133	DRY	Black Cabinet
475-M16-2-C-137	OLIVE DRAB	Black Cabinet
475-M16-2-C-330	DESERT TAN	Black Cabinet
475-M16-2-C-020	BLACK	Black Cabinet
475-M16-2-S-133	DRY	Black Stainless Steel
475-M16-2-S-137	OLIVE DRAB	Black Stainless Steel
475-M16-2-S-330	DESERT TAN	Black Stainless Steel
475-M16-2-S-020	BLACK	Black Stainless Steel

NSN Numbers: 816-01-460-200 (C-D, Black Cabinet Hardware), 816-01-460-200 (C-D, Dry, Black Cabinet Hardware), 816-01-460-200 (C-D, Olive Drab, Black Cabinet Hardware), 816-01-460-200 (C-D, Desert Tan, Black Cabinet Hardware), 816-01-460-200 (C-D, Black, Black Cabinet Hardware)

Two M16s pack into this virtually indestructible, lockable shell to arrive ready either with or without an M203.

Case Exterior
50" L x 17" W x 12.25" H
1270 x 432 x 312 mm

3 PACK M16s WITH/WITHOUT M203 GRENADE LAUNCHER

Item Number	Color	Hardware
475-M16-3-C-133	DRY	Black Cabinet
475-M16-3-C-137	OLIVE DRAB	Black Cabinet
475-M16-3-C-330	DESERT TAN	Black Cabinet
475-M16-3-C-020	BLACK	Black Cabinet
475-M16-3-S-133	DRY	Black Stainless Steel
475-M16-3-S-137	OLIVE DRAB	Black Stainless Steel
475-M16-3-S-330	DESERT TAN	Black Stainless Steel
475-M16-3-S-020	BLACK	Black Stainless Steel

NSN Numbers: 816-01-460-200 (C-D, Black Cabinet Hardware), 816-01-460-200 (C-D, Dry, Black Cabinet Hardware), 816-01-460-200 (C-D, Olive Drab, Black Cabinet Hardware), 816-01-460-200 (C-D, Desert Tan, Black Cabinet Hardware), 816-01-460-200 (C-D, Black, Black Cabinet Hardware)

Designed to fit three M16s, with or without an attached M203 grenade launcher, plus room for additional accessories.

Case Exterior
50" L x 17" W x 12.25" H
1270 x 432 x 312 mm

MK19 GRENADE LAUNCHER

Item Number	Color	Hardware
475-MK19-C-133	DRY	Black Cabinet
475-MK19-C-137	OLIVE DRAB	Black Cabinet
475-MK19-C-330	DESERT TAN	Black Cabinet
475-MK19-C-020	BLACK	Black Cabinet
475-MK19-S-133	DRY	Black Stainless Steel
475-MK19-S-137	OLIVE DRAB	Black Stainless Steel
475-MK19-S-330	DESERT TAN	Black Stainless Steel
475-MK19-S-020	BLACK	Black Stainless Steel

NSN Numbers: 816-01-460-200 (C-D, Black Cabinet Hardware), 816-01-460-200 (C-D, Dry, Black Cabinet Hardware), 816-01-460-200 (C-D, Olive Drab, Black Cabinet Hardware), 816-01-460-200 (C-D, Desert Tan, Black Cabinet Hardware), 816-01-460-200 (C-D, Black, Black Cabinet Hardware)

One MK19 grenade launcher fits securely (without tripod) in a protective form insert.

Case Exterior
50" L x 17" W x 12.3" H
1270 x 432 x 312 mm

M24 WITH SCOPE



Item Number	Color	Hardware
675-M24-C-003	GRAY	Black Cabinet
675-M24-C-037	OLIVE DRAB	Black Cabinet
675-M24-C-060	DESERT TAN	Black Cabinet
675-M24-C-085	BLACK	Black Cabinet
675-M24-S-102	GRAY	Black Stainless Steel
675-M24-S-137	OLIVE DRAB	Black Stainless Steel
675-M24-S-060	DESERT TAN	Black Stainless Steel
675-M24-S-085	BLACK	Black Stainless Steel

Pack your weapon in a solid case designed to hold one M24 with scope and accessories, including a night vision scope.

Case Exterior
50" L x 17" W x 10" H
1270 x 432 x 254 mm

M60 WITH SPARE BARREL



Item Number	Color	Hardware
675-M60-C-003	GRAY	Black Cabinet
675-M60-C-037	OLIVE DRAB	Black Cabinet
675-M60-C-060	DESERT TAN	Black Cabinet
675-M60-C-085	BLACK	Black Cabinet
675-M60-S-102	GRAY	Black Stainless Steel
675-M60-S-137	OLIVE DRAB	Black Stainless Steel
675-M60-S-060	DESERT TAN	Black Stainless Steel
675-M60-S-085	BLACK	Black Stainless Steel

Pack a single M60 into custom-cut foam and lockable security with room for a spare barrel and two demulmiling deaccess bags.

Case Exterior
50" L x 17" W x 12.3" H
1270 x 432 x 312 mm

NSN Numbers: 675-M60-C-003 (Gray, Black Cabinet Hardware), 675-M60-C-037 (Olive Drab, Black Cabinet Hardware), 675-M60-C-060 (Desert Tan, Black Cabinet Hardware), 675-M60-C-085 (Black, Black Cabinet Hardware), 675-M60-S-102 (Gray, Black Stainless Steel Hardware), 675-M60-S-137 (Olive Drab, Black Stainless Steel Hardware), 675-M60-S-060 (Desert Tan, Black Stainless Steel Hardware), 675-M60-S-085 (Black, Black Stainless Steel Hardware)

M240B MACHINE GUN & SPARE BARREL



Item Number	Color	Hardware
675-M240B-C-103	GRAY	Black Cabinet
675-M240B-C-137	OLIVE DRAB	Black Cabinet
675-M240B-C-160	DESERT TAN	Black Cabinet
675-M240B-C-085	BLACK	Black Cabinet
675-M240B-S-103	GRAY	Black Stainless Steel
675-M240B-S-137	OLIVE DRAB	Black Stainless Steel
675-M240B-S-160	DESERT TAN	Black Stainless Steel
675-M240B-S-085	BLACK	Black Stainless Steel

Configured to hold an M240B machine gun (without tripod) and an extra barrel. Designed for protection in any scenario. Also will hold the new M240C with its Infantry Modification Kit.

Case Exterior
39.4" L x 19.3" W x 12.6" H
1509 x 490 x 325 mm

NSN Numbers: 675-M240B-C-103 (Gray, Black Cabinet Hardware), 675-M240B-C-137 (Olive Drab, Black Cabinet Hardware), 675-M240B-C-160 (Desert Tan, Black Cabinet Hardware), 675-M240B-C-085 (Black, Black Cabinet Hardware), 675-M240B-S-103 (Gray, Black Stainless Steel Hardware), 675-M240B-S-137 (Olive Drab, Black Stainless Steel Hardware), 675-M240B-S-160 (Desert Tan, Black Stainless Steel Hardware), 675-M240B-S-085 (Black, Black Stainless Steel Hardware)

M249 SAW PLUS SPARE BARREL



Item Number	Color	Hardware
675-M249-C-103	GRAY	Black Cabinet
675-M249-C-137	OLIVE DRAB	Black Cabinet
675-M249-C-160	DESERT TAN	Black Cabinet
675-M249-C-085	BLACK	Black Cabinet
675-M249-S-103	GRAY	Black Stainless Steel
675-M249-S-137	OLIVE DRAB	Black Stainless Steel
675-M249-S-160	DESERT TAN	Black Stainless Steel
675-M249-S-085	BLACK	Black Stainless Steel

Designed to hold one M249 SAW weapon securely with room for one spare barrel and two demulmiling deaccess bags.

Case Exterior
50" L x 17" W x 13.3" H
1270 x 432 x 312 mm

NSN Numbers: 675-M249-C-103 (Gray, Black Cabinet Hardware), 675-M249-C-137 (Olive Drab, Black Cabinet Hardware), 675-M249-C-160 (Desert Tan, Black Cabinet Hardware), 675-M249-C-085 (Black, Black Cabinet Hardware), 675-M249-S-103 (Gray, Black Stainless Steel Hardware), 675-M249-S-137 (Olive Drab, Black Stainless Steel Hardware), 675-M249-S-160 (Desert Tan, Black Stainless Steel Hardware), 675-M249-S-085 (Black, Black Stainless Steel Hardware)

Milcor-Hardigg Cases CONUS: 800.542.7344 | OCONUS: 413.665.2165

MINI GUN



Item Number	Color	Hardware
675-MINGUN-C-103	GRAY	Black Cabinet
675-MINGUN-C-137	OLIVE DRAB	Black Cabinet
675-MINGUN-C-160	DESERT TAN	Black Cabinet
675-MINGUN-C-085	BLACK	Black Cabinet
675-MINGUN-S-103	GRAY	Black Stainless Steel
675-MINGUN-S-137	OLIVE DRAB	Black Stainless Steel
675-MINGUN-S-160	DESERT TAN	Black Stainless Steel
675-MINGUN-S-085	BLACK	Black Stainless Steel

Securely ships and stores one Mini Gun (Jawling Gun) with room for accessories.

Case Exterior
44" L x 23.9" W x 13.7" H
1118 x 607 x 348 mm

NSN Number: 675-MINGUN-C-103 (Gray, Black Cabinet Hardware)

6 PACK TRANSPORT/RIFLE RACK M4, M16



Item Number	Color	Hardware
675-M4-w/a-103	GRAY	Black Cabinet
675-M4-w/a-137	OLIVE DRAB	Black Cabinet
675-M4-w/a-160	DESERT TAN	Black Cabinet
675-M4-w/a-085	BLACK	Black Cabinet

Fit any combination of six M4s or M16s.

Case Exterior
45.4" L x 24" W x 16.5" H
1153 x 610 x 470 mm

12 PACK TRANSPORT/RIFLE RACK M4, M16



Item Number	Color	Hardware
675-M4-w/a-10-103	GRAY	Black Cabinet
675-M4-w/a-10-137	OLIVE DRAB	Black Cabinet
675-M4-w/a-10-160	DESERT TAN	Black Cabinet
675-M4-w/a-10-085	BLACK	Black Cabinet

Protects any combination of twelve M4s or M16s.

Case Exterior
45.4" L x 24" W x 26.5" H
1153 x 610 x 673 mm

4 PACK TRANSPORT/RIFLE RACK M4, M16



Item Number	Color	Hardware
675-M4-w/a-4-103	GRAY	Black Cabinet
675-M4-w/a-4-137	OLIVE DRAB	Black Cabinet
675-M4-w/a-4-160	DESERT TAN	Black Cabinet
675-M4-w/a-4-085	BLACK	Black Cabinet

Holds four fully equipped M4s, M16s or any combination two M4s and two M16s up to four. Container can also be used as a lockable rifle rack to keep all weapons safe and secure. Locking bar protects weapons from being disassembled.

Case Exterior
44.8" L x 24" W x 16.5" H
1138 x 604 x 470 mm

NSN Numbers: 675-M4-w/a-4-103 (Gray, Black Cabinet Hardware), 675-M4-w/a-4-137 (Olive Drab, Black Cabinet Hardware)

8 PACK TRANSPORT/RIFLE RACK M4, M16



Item Number	Color	Hardware
675-M4-w/a-8-103	GRAY	Black Cabinet
675-M4-w/a-8-137	OLIVE DRAB	Black Cabinet
675-M4-w/a-8-160	DESERT TAN	Black Cabinet
675-M4-w/a-8-085	BLACK	Black Cabinet

Securely ships fully equipped M4s, M16s or any combination two M4s and two M16s up to eight. Container can also be used as a lockable rifle rack to keep all weapons safe and secure. Locking bar protects weapons from being disassembled.

Case Exterior
44.8" L x 24" W x 26.5" H
1138 x 604 x 673 mm

NSN Numbers: 675-M4-w/a-8-103 (Gray, Black Cabinet Hardware), 675-M4-w/a-8-137 (Olive Drab, Black Cabinet Hardware)

Milcor.com | MilitaryCases.com | StormCase.com

DOUBLE-DUTY FIELD TRANSPORT

FIELDPAK

GSA CONTRACT #GS-11F-01
GSA CONTRACT #GS07F-02
RNL5427344 • MILITARYCASES.COM



NYLON-MOUNTED & TRIPLE
STITCHED HANDLES

ROOM FOR OVERSIZED SCOPES

LIGHTWEIGHT & MANEUVERABLE

ROOM FOR TWO WEAPONS
Two Muzzle Covers & Four
Securing Straps



REMOVABLE ZIPPERED POUCH
Ammunition & Accessory Storage

DESIGNED TO FIT INTO STORM CASE
MODELS: M3100, M3200, M3300

#1 000 DENIER CORDURA® NYLON
Non-Moisture Absorbent & Abrasion Resistant

#9 HEAVY-DUTY YKK® ZIPPER

ADDITIONAL POUCH ATTACHMENT POINTS
Utilizes MOLLE® System

HIGH-DENSITY PADDED WITH
CLOSED-CELL 3/8" FOAM

DETACHABLE PADDED
SHOULDER STRAP



REMOVABLE PAD
Functions as Shooting Mat



WARRANTED FOR LIFE.



www.surveys.northrupinfo.com

473-PWC-DW6100-GLK-00Y Pictured

CASES

LONG CASE



44.10" x 18.00" x 14.00"
(112.1 x 45.7 x 35.5 cm)

40.00" x 15.00" x 12.51"
(101.6 x 38.1 x 31.8 cm)

3.50" / 0.50"
(8.9 cm / 12.7 cm)

37 lbs. (16.8 kg) WITH FOAM
23 lbs. (10.4 kg) NO FOAM



Replacement O-ring,
6 pc. replacement foam set,
document container accessory

9703

EXTERIOR DIMENSIONS

INTERIOR DIMENSIONS

LID/BOTTOM DEPTH

WEIGHT

COLORS

AVAILABLE ACCESSORIES

CERTIFICATES

1560 CASE



35.00" x 17.50" x 10.43"
(88 x 44.3 x 26.5 cm)

30.33" x 15.43" x 8.00"
(77.1 x 39.2 x 20.3 cm)

3.00" / 7.00"
(7.6 cm / 17.8 cm)

30 lbs. (13.6 kg) WITH FOAM
17 lbs. (7.7 kg) NO FOAM



Replacement O-ring, 4 pc. foam set,
Pick N' Pluck™ foam only,
padded divider set, lid organizer

9707
DEF STAN 91-41/STANAG 4250

EXTERIOR DIMENSIONS

INTERIOR DIMENSIONS

LID/BOTTOM DEPTH

WEIGHT

COLORS

AVAILABLE ACCESSORIES

CERTIFICATES

1560LFC with lid organizer



33.00" x 17.00" x 10.43"
(83.8 x 43.0 x 26.5 cm)

30.33" x 15.43" x 8.00"
(77.1 x 39.2 x 20.3 cm)

3.00" / 7.00"
(7.6 cm / 17.8 cm)

30 lbs. (13.6 kg) WITH FOAM
17 lbs. (7.7 kg) NO FOAM



Replacement O-ring

9707
DEF STAN 91-41/STANAG 4250

LONG CASE



50.00" x 18.00" x 8.13"
(127.0 x 45.7 x 20.6 cm)

50.50" x 15.50" x 5.50"
(128.3 x 39.3 x 13.9 cm)

1.75" / 0.50"
(4.4 cm / 12.7 cm)

35.57 lbs. (16.1 kg) WITH FOAM
23.50 lbs. (10.7 kg) NO FOAM



Replacement O-ring,
3 pc. replacement foam set

9707
DEF STAN 91-41/STANAG 4250

EXTERIOR DIMENSIONS

INTERIOR DIMENSIONS

LID/BOTTOM DEPTH

WEIGHT

COLORS

AVAILABLE ACCESSORIES

CERTIFICATES

1560LOC with computer sleeve and accessories pouch

NEW



35.00" x 17.50" x 10.43"
(88 x 44.3 x 26.5 cm)

30.33" x 15.43" x 8.00"
(77.1 x 39.2 x 20.3 cm)

3.00" / 7.00"
(7.6 cm / 17.8 cm)

30 lbs. (13.6 kg) WITH FOAM
17 lbs. (7.7 kg) NO FOAM



Replacement O-ring

9707
DEF STAN 91-41/STANAG 4250

EXTERIOR DIMENSIONS

INTERIOR DIMENSIONS

LID/BOTTOM DEPTH

WEIGHT

COLORS

AVAILABLE ACCESSORIES

CERTIFICATES

1600 CASE



34.50" x 18.43" x 8.00"
(87.6 x 46.8 x 20.3 cm)

31.43" x 16.50" x 7.50"
(79.7 x 41.9 x 19.0 cm)

1.75" / 6.12"
(4.4 cm / 15.5 cm)

34.11 lbs. (15.4 kg) WITH FOAM
19 lbs. (8.6 kg) NO FOAM



Replacement O-ring, 4 pc. foam set,
Pick N' Pluck™ foam only,
padded divider set, lid organizer

9703 • MIL-C-41951 • DEF STAN 91-41/STANAG 4250 • ATA 300

LONG CASE

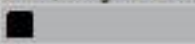


50.43" x 18.43" x 11.33"
(128.0 x 46.8 x 28.8 cm)

54.50" x 15.50" x 8.00"
(139.3 x 39.3 x 20.3 cm)

1.88" / 8.75"
(4.8 cm / 22.1 cm)

36 lbs. (16.3 kg) WITH FOAM
29 lbs. (13.1 kg) NO FOAM



Replacement O-ring,
4 pc. replacement foam set,
document container accessory

N/A

EXTERIOR DIMENSIONS

INTERIOR DIMENSIONS

LID/BOTTOM DEPTH

WEIGHT

COLORS

AVAILABLE ACCESSORIES

CERTIFICATES

1560SC with padded dividers and lid organizer

NEW



35.00" x 17.50" x 10.43"
(88 x 44.3 x 26.5 cm)

30.33" x 15.43" x 8.00"
(77.1 x 39.2 x 20.3 cm)

3.00" / 7.00"
(7.6 cm / 17.8 cm)

30 lbs. (13.6 kg) WITH FOAM
17 lbs. (7.7 kg) NO FOAM



Replacement O-ring

9707
DEF STAN 91-41/STANAG 4250

EXTERIOR DIMENSIONS

INTERIOR DIMENSIONS

LID/BOTTOM DEPTH

WEIGHT

COLORS

AVAILABLE ACCESSORIES

CERTIFICATES

1600EMS CASE



34.50" x 18.43" x 8.00"
(87.6 x 46.8 x 20.3 cm)

31.43" x 16.50" x 7.50"
(79.7 x 41.9 x 19.0 cm)

1.75" / 6.12"
(4.4 cm / 15.5 cm)

19 lbs. (8.6 kg)



EMS accessory set

9703 • MIL-C-41951/STANAG 4250 • ATA 300



Watch a video of Concrete Canvas
by clicking on the links:

Pelican RALS Remote Area Lighting, rechargeable LED systems

http://www.youtube.com/watch?v=2gOBF_haPfc

Pelican Cases

<http://www.youtube.com/watch?v=jwEtn0r3cWI>

Pelican Lights and Cases Military Overview

http://www.youtube.com/watch?v=rG_xN92c4mU

OVERVIEW

If you engage with Taffys you will see the difference.

We have a fully committed team to look after your needs and deliver solutions.

Whether you use our Support Services or Distribution Division you are dealing with an experienced team that genuinely cares about the decisions we make.

We excel at solving problems and finding solutions.

Taffys ethos is “Making It Happen”

We look forward to working with you.



Contact: info@taffys.biz
Mob: +971 50 246 56 46
www.taffys.biz